



# Open Source & The Apache Way



# Aditya Sharma



Apache OFBiz Committer



Apache Roller PMC & Committer



# Apache Local Community

ALC comprises local groups of Apache (Open Source) enthusiasts, called an 'ALC Chapter'.

<https://s.apache.org/alc>

ALC Chapters

- ALC Indore, India
- ALC Beijing, China
- ALC Warsaw, Poland
- ALC Budapest, Hungary



# Agenda

- Open source software
  - a. What is Open source software?
  - b. History
  - c. Comparison with closed source
  - d. Why you should know Open Source?
  - e. Why you should contribute to Open Source?
  - f. How can you contribute?
  - g. License
  - h. Examples



# Agenda

- Apache Software Foundation
  - a. History
  - b. How ASF works?
  - c. Projects
  - d. Apache Project Ecosystem
  - e. The Apache Way
  - f. Where to start?
  - g. How to contribute?



# What is Open Source Software?

- Open source software is software with source code that anyone can inspect, modify, and enhance.
- Source code is released under a license in which the copyright holder grants users the rights to study, change, and distribute the software to anyone and for any purpose.
- <https://opensource.org/osd>



# Open Source Software - History

- If we have some good, it must be shared, 'A childhood learning'
- Richard Stallman started the GNU Project and founded the Free Software Foundation.



# Open-Source Vs Closed Source

- Closed sources are often refer as proprietary
- What is not open-source
  - a. The thing that you are freely using?





# Why you should know Open Source?

- It's trending!
- Offers numerous benefits:
  - a. Security
  - b. Training
  - c. Control
  - d. Stability



# Why you should contribute to Open Source?

- Improve software you rely on
- Improve existing skills
- Meet people who are interested in similar things
- Find mentors and teach others
- Build public artifacts that help you grow a reputation (and a career)
- Learn people skills
- It's empowering to be able to make changes, even small ones



# How can you contribute?

- You don't have to contribute code
- Do you like planning events?
- Do you like to design?
- Do you like to write?
- Do you like organizing?
- Do you like to code?
- Do you like helping people?
- Do you like helping others code?
- You don't just have to work on software projects!



# Open-Source license

- Open source licenses are licenses that comply with the Open Source Definition – in brief, they allow software to be freely used, modified, and shared.
- Popular Licenses
  - a. Apache License 2.0
  - b. GNU General Public License (GPL)
  - c. MIT license
  - d. Mozilla Public License 2.0

---

# Examples





# Apache Software Foundation

- The World's Largest Open Source Foundation
- Established in 1999, the ASF is a US 501(c)(3) charitable organization
- Funded by individual donations and corporate sponsors
- Our all-volunteer board oversees more than 350 leading Open Source projects, including Apache HTTP Server



# History

- Started with Apache™ HTTP Web Server project - the web server often simply called "Apache".
- From the humble beginnings of less than a dozen software engineers sharing code patches via email in February of 1995, to the incorporation of the ASF in June of 1999

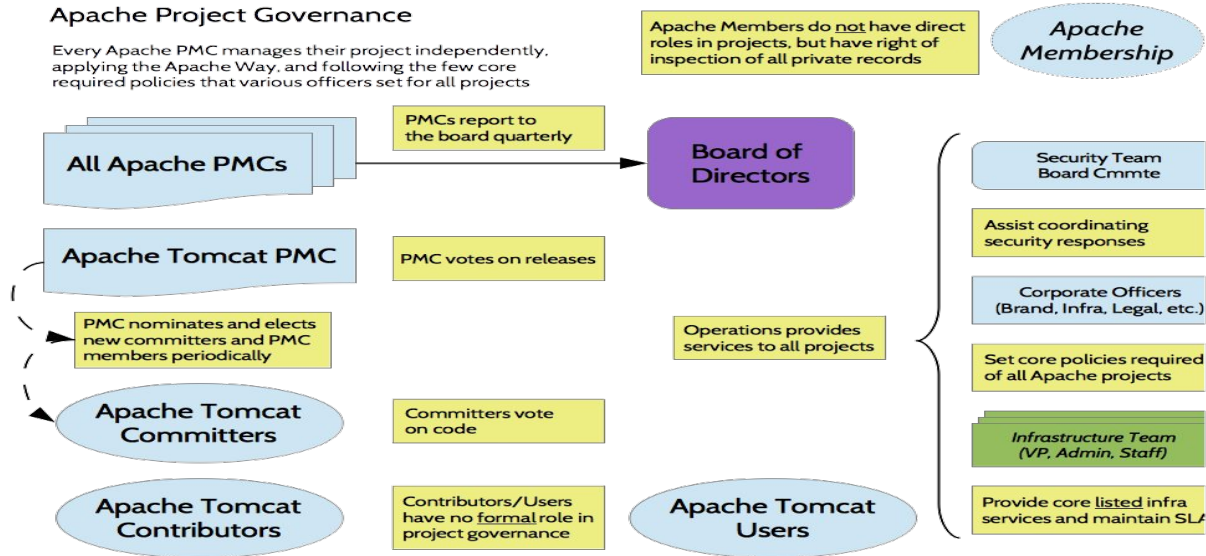


# Projects

- Currently 350+ open source initiatives at the ASF
- Apache HTTP Server: Web/servers
- Apache Kafka: Big data
- Apache Maven: Build management
- Apache CloudStack: Cloud
- Apache CouchDB: Database
- Apache OFBiz: Enterprise resource planning
- Apache Spark: Machine learning
- Apache Cordova: Mobile
- Apache Tomcat: Java/servers
- Apache NetBeans
- And many many more.....



# How Apache project works?





# Apache Project Ecosystem

- Website
- Community
- Code repository - SVN/Git
- Issue tracker - Jira, BugZilla
- Documentation - Confluence
- Mailing list
- Automated builds



# The Apache Way

Methodology followed to ensure collaborative environment across the projects

- Community - over code
- Merit - recognizing your work
- Communication - how we write
- Open Development - for everything
- Decision Making - consensus & Votes



# Where to start?

- Finding the right project
  - a. <https://projects.apache.org/projects.html>
  - b. <https://projects.apache.org/projects.html?category>
  - c. <https://projects.apache.org/projects.html?language>
- Join the community



# How to contribute?

- ICLA
- Subscribe to mailing list
- Project Documentation
- Code Development
- Testing and review patches



**Thank You**