

# ESME Windows Installation Guide for Dummies

## Table of content

ESME Windows Installation Guide for Dummies .....	1
JRE 6 .....	1
Tomcat .....	2
Maven .....	2
ESME .....	3
Building ESME .....	4
Deploying ESME .....	4
Starting ESME.....	5

## JRE 6

Get the latest JRE 6 from Sun: <http://java.sun.com/javase/downloads/index.jsp>

Follow the installation instructions

Check if the JAVA\_HOME environment variable is set correctly

- Start > Control Panel > System > Advanced > Environment Variables
- Under “System variables” you should see a JAVA\_HOME entry
  - If there is such a variable click on “Edit” and check if the path lead to the corresponding JRE 6 path (e.g. C:\Program Files\Java\jre6)
  - If the variable is missing click on “New”, set the “Variable name” to JAVA\_HOME and the “Variable value” to the right path (e.g. C:\Program Files\Java\jre6)

In case you have a proxy for your internet connection you should check the Java network settings

- Start > Control Panel > Java > Network settings
- If the default setting is not correct (use browser settings) enter your proxy settings directly

## Tomcat

Get the latest Tomcat release: <http://tomcat.apache.org/download-55.cgi> (the “Windows Service Installer” is the best choice), install and start it. Remember your port number.

During the installation procedure you can take the default (**port 8080**) or **port 80**.

## Maven

Get the latest Maven release: <http://maven.apache.org/download.html>

Unzip the file on your machine (preferably with no blanks in the path name, e.g. c:\maven)

Some environment variables need to be set.

- Start > Control Panel > System > Advanced > Environment Variables
- Add the following system variables with the corresponding values
- Variable: **M2\_HOME**                      Value: **<path you've unzipped maven>** (e.g. **c:\maven**)
- Variable: **M2**                              Value: **%M2\_HOME%\bin**
- Variable: **MAVEN\_OPTS**              Value: **-Xms256m -Xmx512m**

In case you have a proxy for your internet connection you need to change the settings.xml file in the conf directory. It should look similar to this:

```
<proxies>
  <proxy>
    <id>optional</id>
    <active>true</active>
    <protocol>http</protocol>
    <host>proxy</host>
    <port>8080</port>
    <nonProxyHosts>local.net|some.host.com</nonProxyHosts>
  </proxy>
</proxies>
```

## ESME

### *Get the sources*

Get the latest sources at

<http://svn.apache.org/repos/asf/incubator/esme/trunk/site/build/site/en/download/download.html>

Be aware that the source code might have errors/bugs. Therefore you can try out the following revisions that I've tried out and build successfully:

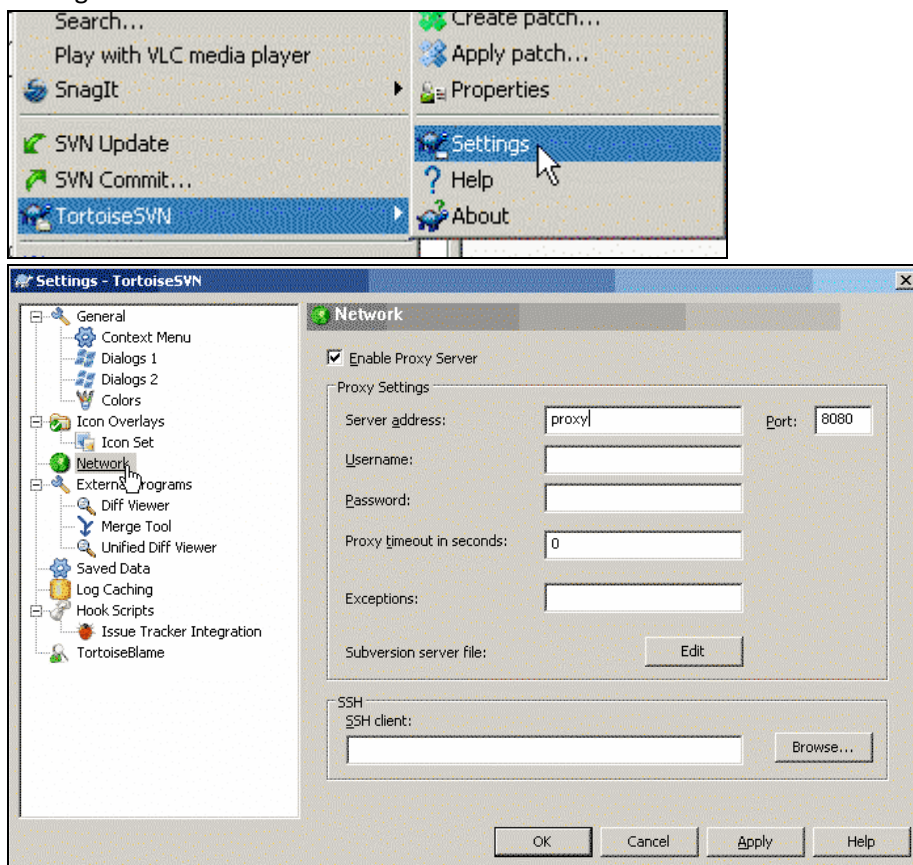
- Rev. 885445

Ideally you should have a subversion client installed on your machine (e.g. Tortoise SVN:

<http://tortoisesvn.net/downloads>).

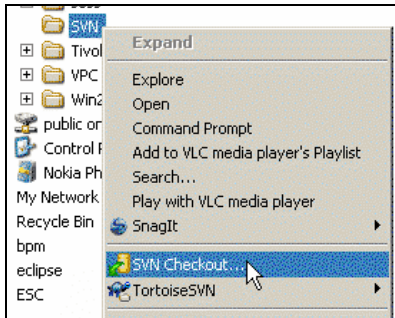
The next steps describe how you can download the code with the Tortoise svn client:

- In case you have a proxy for your internet connection you need to change the Tortoise SVN settings.

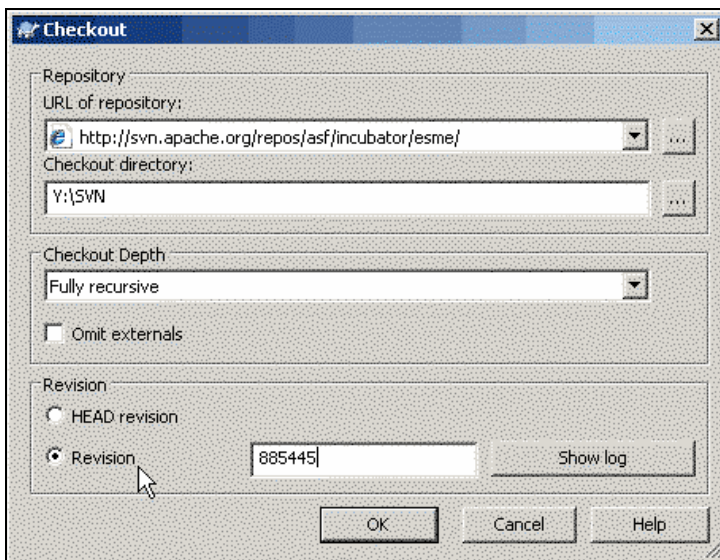


After changing click on "OK".

- Start the checkout with the SVN client (right-click mouse on an empty directory).



- Enter the URL to the ESME repository. In case you want to have the most current sources select “HEAD revision”. If you want to be on the safe side take one of the revisions listed above.



- After clicking “OK” the code should start downloading.

## ***Building ESME***

Start the command line: press the <windows> and <R> key.

Change to the trunk\server directory of the downloaded ESME code (with **cd xxxxx**).

Start the build with **mvn install**.

If no errors appeared you can find a .WAR file in the trunk\server\target directory.

## ***Deploying ESME***

Ensure that the Tomcat service is running.

Take the .war file and rename it to esme.war.

Copy the file to the tomcat webapps directory (e.g. C:\tomcat60\webapps). Tomcat will expand the war file automatically.

Now you’ve deployed ESME on the tomcat server.

## ***Starting ESME***

Go to your browser and call the address <http://localhost:<tomcat port you've selected>/esme>

Enjoy! 😊