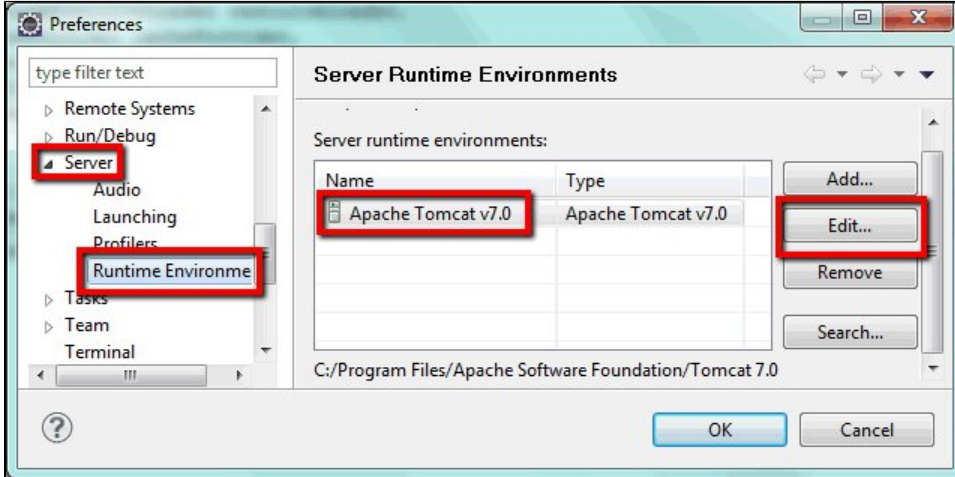


Monitoring EhCache with JMX

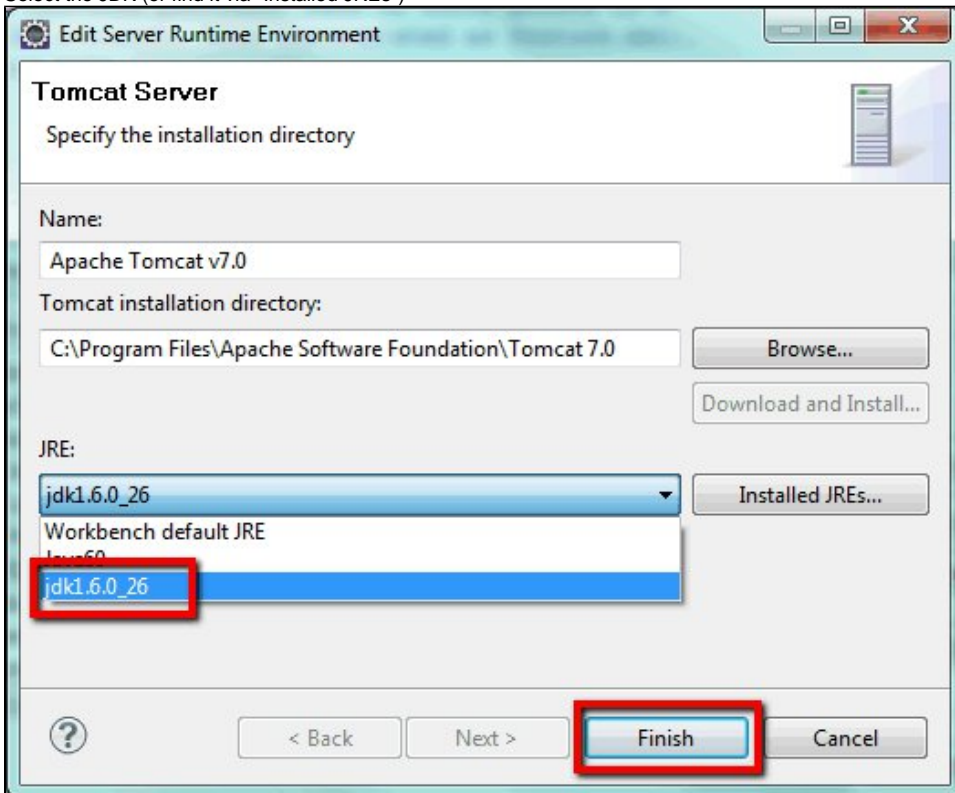
Monitoring EhCache with JMX

EhCache has several MBeans that will tell you all about the caches that are running. See here: <http://ehcache.org/documentation/operations/jmx>

1. Make sure Tomcat is running with the JDK and not the JRE.
2. Go to Window->Preferences->Server->Runtime Environments

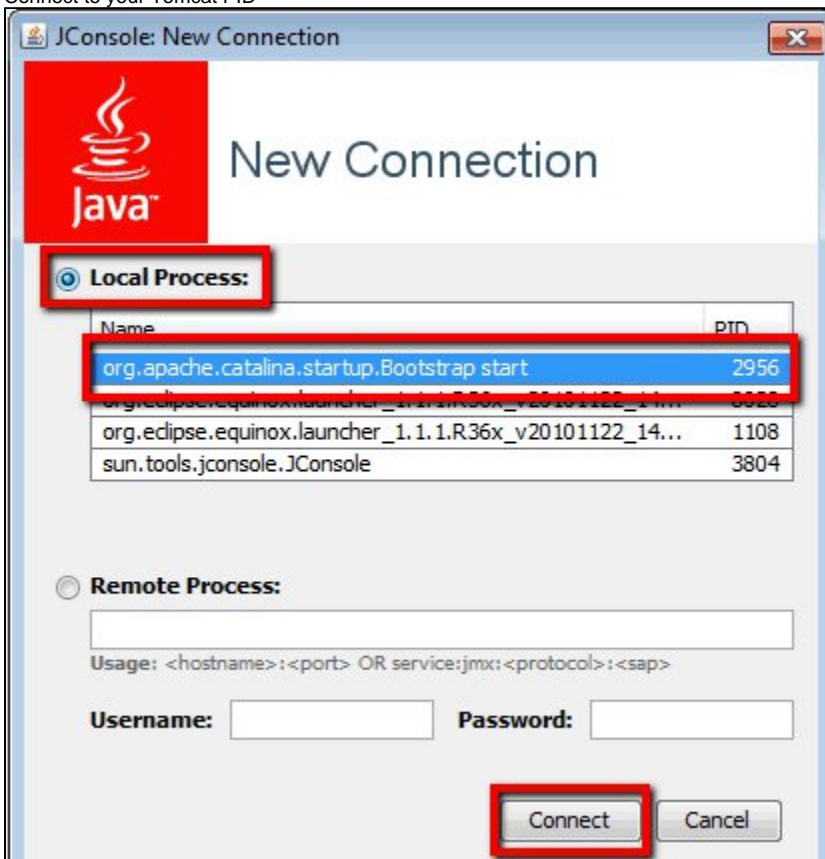


3. Select the JDK (or find it via "Installed JREs")



4. Click Finish
5. Start Tomcat in Eclipse in the normal way.
6. Go to <JDK Home>/bin
7. Launch jconsole.exe

8. Connect to your Tomcat PID



9. Go to the "MBeans" tab

10. Check out all of the cool stuff for your caches

