

Starting and stopping the server

← Running Geronimo

↑ Installing and running

↑ Starting and stopping the server

Starting and stopping Geronimo via console

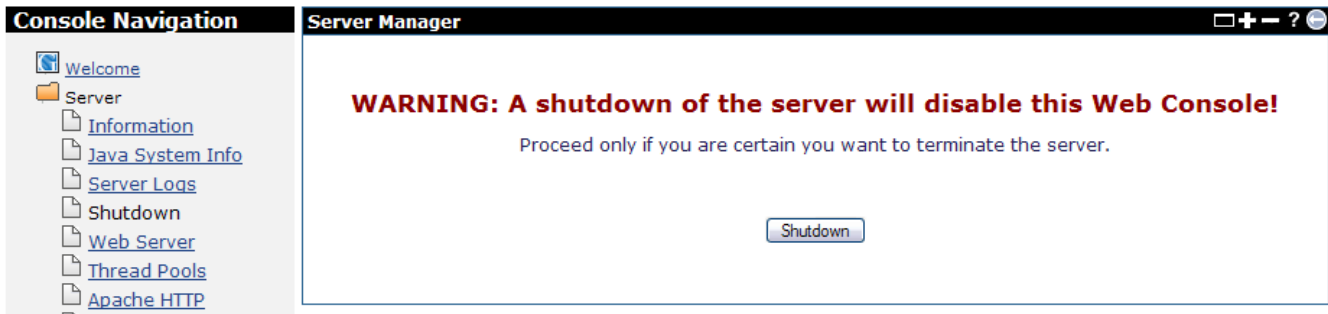
There are a few command line alternatives to start the server. From a command line window or terminal change directory to `<geronimo_home>/bin` and run `startup` or `geronimo run` or `geronimo start` command. Refer to the [Startup](#) and [Geronimo](#) from the [Tools and commands](#) section for all the options for these commands.

To stop the server you will have to open a new command line window or terminal, change directory to `<geronimo_home>/bin` and run the `shutdown` command. You will be prompted for username and password. Alternatively you can press **Ctrl+C** on the terminal that Geronimo is running to kill the process. Refer to the [Shutdown](#) and [Geronimo](#) from the [Tools and commands](#) section for the available options for these commands.

If the server is already running you have the option of using the [Introducing Geronimo Administration Console](#) to shutdown the server remotely. With the server up and running open a Web browser and point to the following URL to access the console:

<http://localhost:8080/console>

Log in to the Geronimo Administration Console and click on **Server > Shutdown** on the Console Navigation menu on the left.



When you click on the **Shutdown** button in the Server Manager portlet, you will be prompted one more time to confirm the server shutdown. Click **OK** to confirm and shutdown the server. The connection from the Administration Console will be lost and you will need to restart the server from a terminal or command line window.