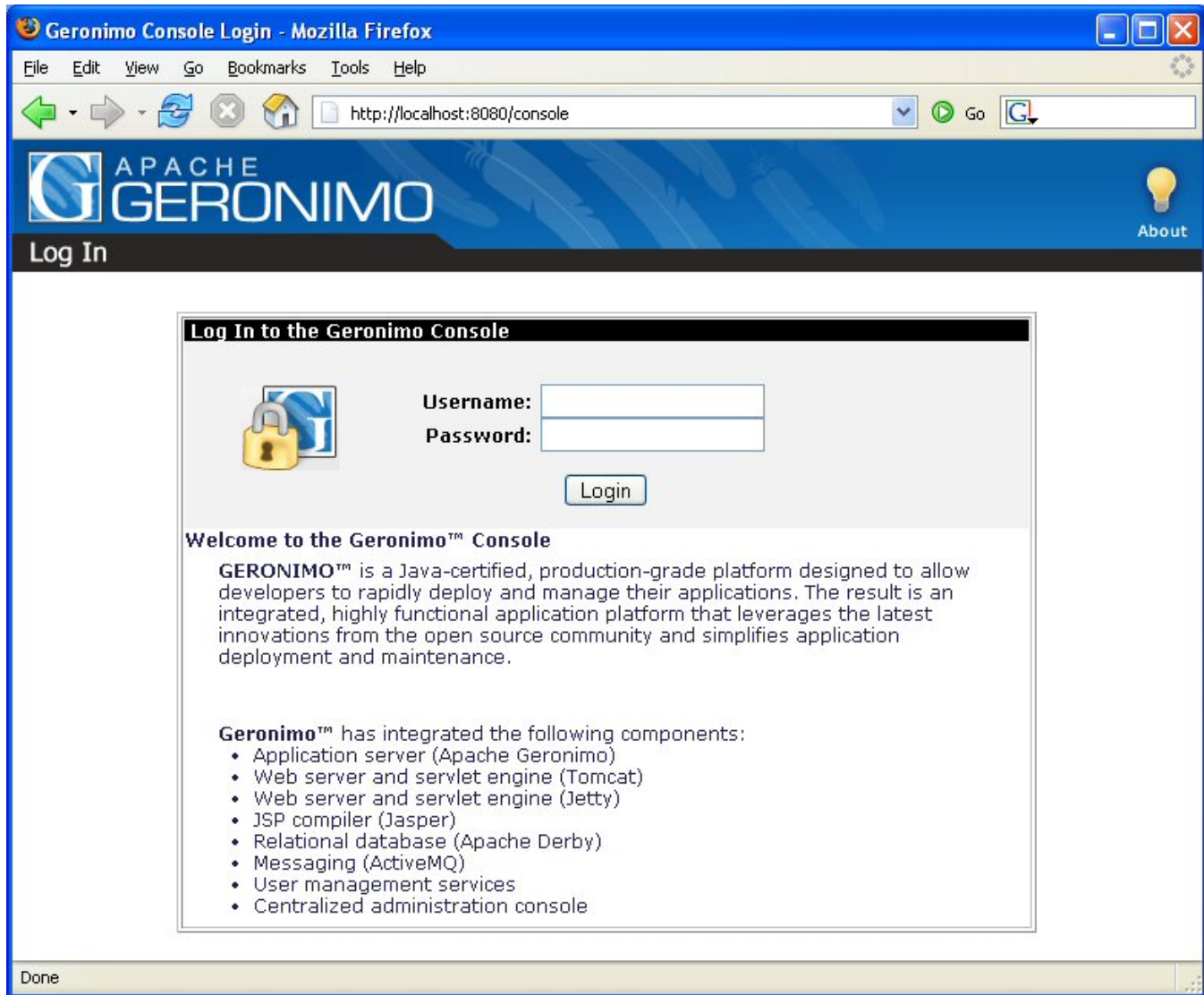


Geronimo Administration Console

The Geronimo Administration Console is a Web based interface that provides a convenient, user friendly way to administer many aspects of the Geronimo Server. Once you have the Apache Geronimo server started (see [Tools and commands](#)) you can access the Administration Console by pointing your browser to the following URL:

<http://localhost:8080/console>

The Administration Console log in page is depicted in the following figure.



Log in by specifying **system** as the username and **manager** as the password. Once you are logged in you will be redirected to the console's welcome page. The console has two main areas, a navigation panel on the left and a main content area on the right.

The navigation panel on the left provides easy access to the individual tasks, it is always present and allows easy transition from task to task. The main content area on the right is where the real work happens, this area will change as you select the different tasks in the navigation panel on the left. Each view contains one or more portlets that typically include a link for help in the header, see the following figure as an example.



[Back to Top](#)

Console Navigation (left panel)



As briefly explained in the previous section, the navigation panel provides access to the different tasks for administering the resources in Geronimo. This navigation panel is organized in the following main groups:

-  [#Welcome](#)
- [#Server](#)
- [#Services](#)
- [#Applications](#)
- [#Security](#)
- [#Embedded DB](#)
-  [#JMX Viewer](#)
-  [#LDAP Viewer](#)

Welcome

This is the welcome page you see when you log in. It provides a general description of what the Geronimo Administration Console is as well as some shortcut links to common tasks such as:

Common Console Actions

-  Database Pools
-  Security Realms
-  JMS Resources
-  Deploy Applications
- Web Server Ports
-  Memory & Uptime

This page also provide links to:

Geronimo Online

- [The Geronimo Home Page](#)
- [Problem Tracking Database](#)
- [Users Mailing List](#)
- [Developers Mailing List](#)
- [Geronimo IRC chat](#)






Geronimo Documentation

- [FAQ](#)
- [Wiki](#)
- [Geronimo Documentation](#)
- [Additional Documentation](#)

[Back to Top](#)

Server

Organized under the Server group you will find statistical information as well as links for configuring and administering the different servers. This group is organized as follows:

-  [#Information](#)
-  [#JVM](#)
-  [#Server Logs](#)
-  [#Shutdown](#)
- [#Web Server](#)
- [#JMS Server](#)
-  [#Thread Pools](#)
- [#Apache HTTP](#)

[Back to Top](#)

Information

This portlet displays the server's uptime and the resources being used by the JVM.

JVM

This portlet displays the values of the system properties available to the server process.

Server Logs

This option provides four portlets, **Log Manager**, **Server Log Viewer**, **Derby Log Viewer** and **Web Access Log Viewer**.

- **Log Manager**
This portlet allows the user to select a configuration file for logging and/or change the log level and Refresh period. The default "Config file" is a standard **log4j** file and defines the location where the Geronimo Server will log Geronimo output. The configuration file also defines the log level, the maximum log file size, and other attributes associated with logging.

- **Server Log Viewer**

This portlet displays the Geronimo server log and is helpful for debugging problems with the Geronimo Console and with deployed applications.

- **Derby Log Viewer**

This portlet displays the log file for Geronimo's internal database, Derby.

- **Web Access Log Viewer**

This portlet displays and filters the Web container log file. This log file contains HTTP accesses and messages from JSP and servlet applications that are running on Geronimo. By default this portlet displays the contents of the log file for the current date. You can apply different filtering criteria to view only data of your interest.

[Back to Top](#)

Shutdown

This portlet allows a warm reboot of the server or a shutdown of it. A warm reboot will shutdown all applications and services and reboot the Geronimo kernel within the same process. The Administration Console session will be disconnected. Reconnect after the server is back up.

A shutdown will shutdown the server and cause the JVM to exit. To continue using the Geronimo Console after a shutdown, Geronimo must be restarted.

[Back to Top](#)

Web Server

This option provides two portlets, **Web Server Manager** and **Network Listeners**.

- **Web Server Manager**

When this portlet is enabled, it will collect server performance statistics. The values being measured are:

- - Requests
 - Connections
 - Errors
 - Active Requests
 - Request Duration
 - Connections Open
 - Connection Requests
 - Connection Duration



For the last five values, **Count**, **Average** and **Maximum** will be also displayed.

- **Network Listeners**

This portlet displays all the connector listeners (HTTP, HTTPS and AJP) and status for both Jetty and Tomcat Web containers. From this portlet you can add new listeners and change the status (stop, start, delete) of the existing connectors.

[Back to Top](#)

JMS Server

This option provides two portlets, **JMS Server Manager** and **JMS Network Listeners**.

- **JMS Server Manager**

This portlet displays the available JMS Brokers and their status. From this portlet you can also start, stop, edit, add and delete JMS Brokers.

- **JMS Network Listeners**

This portlet displays all the network connectors configured for the currently available JMS Brokers. From this portlet you can also start, stop, edit, add and delete JMS network connectors.

[Back to Top](#)

Thread Pools

This portlet lists all the thread pools defined in the server. It shows the pool size and allows you to monitor individually each of the listed thread pools. By monitoring these threads you can gather statistical information such as pool max, lowest recorded, highest recorded and threads in use.

[Back to Top](#)

Apache HTTP

This portlet is a wizard that walks you through the process of configuring Apache Geronimo to use a remote Apache 2 HTTP server. To configure the remote HTTP server you will need to install the *mod_jk* Apache module on the remote server. Based on a series of questions the wizard will guide you through the configuration process.

[Back to Top](#)

Services

Organized under this group you will find links for configuring the following services:



[#Common Libs](#)



[#Database Pools](#)



[#JMS Resources](#)

Common Libs

This portlet displays the artifacts installed in the server's repository. The layout of the repository is the same as that used by Apache Maven making it possible to easily copy files over. From this portlet you can also install new artifacts.

[Back to Top](#)

Database Pools

This portlet displays all the available database pools and their status. Only server-wide database pools can be edited in this portlet, database pools deployed as part of a single application cannot, you will have to change the deployment plan in the application instead.

From this portlet you can edit the available, system-wide, database pools. There is also a **usage** link with examples of how to use the pool from your application.

This portlet includes a database pool creation wizard for new pools and also lets you import database pools from JBoss 4 and WebLogic 8.1.

[Back to Top](#)

JMS Resources

This portlet lists all the JMS resource groups available in the Geronimo server, that is queues and factories. From this portlet you can create new JMS resource groups, this portlet provides two wizards, one for ActiveMQ and one for another JMS provider. For this last one you will have to provide the specific resource adapter RAR needed to connect to that particular provider.

[Back to Top](#)

<!-- CONTINUE HERE -->

Applications

Organized under this group you will find links for installing and administering applications.



[#Deploy New](#)



[#Application EARs](#)



[#Web App WARs](#)



[#EJB JARs](#)



[J2EE Connectors](#)



[#App Clients](#)



[#System Modules](#)



[#Plugins](#)

Deploy New

This portlet allows you to deploy new applications to the Apache Geronimo server. Web applications require deployment plans, which are either packaged with the war file or kept in a separate file which is typically called **geronimo-web.xml**.

[Back to Top](#)

Application EARs

This portlet displays the installed Application EARs and their status. From this portlet you can also stop, start and uninstall the available Application EARs.

[Back to Top](#)

Web App WARs

This portlet displays the installed Web Applications and their status. From this portlet you can also stop, start and uninstall the available Web Applications.

[Back to Top](#)

EJB JARs

This portlet displays the installed EJB JARs and their status. From this portlet you can also stop, start and uninstall the available EJB JARs.

[Back to Top](#)

J2EE Connectors

This portlet displays the installed J2EE Connectors and their status. From this portlet you can also stop, start and uninstall the available J2EE Connectors.

[Back to Top](#)

App Clients

This portlet displays the installed Application Clients and their status. From this portlet you can also stop, start and uninstall the available Application Clients.

[Back to Top](#)

System Modules

This portlet displays the installed System Modules and their status. From this portlet you can also stop, start and uninstall the available System Modules.



[Back to Top](#)

Plugins

This portlet allows you to install or create Geronimo plugins. From this portlet you can select a remote plugins repository and search for available plugins and install them or export to plugins just about any module you have already installed in Geronimo.

[Back to Top](#)

Security

-  [#Console Realm](#)
-  [#Security Realm](#)
- [#Keystores](#)
- [#Certificate Authority](#)

Console Realm

This option provides two portlets, **Console Realm Users** and **Console Realm Groups**.

- **Console Realm Users**
This portlet displays all the Console Realm Users and allows you to add, change password and delete them.
- **Console Realm Groups**
This portlet displays all the Console Realm Groups and allows you to add, modify and delete them.

[Back to Top](#)

Security Realm

This portlet displays all available security realms and their status. Only server-wide security realms can be edited in this portlet, security realms deployed as part of a single application cannot, you will have to change the deployment plan in the application instead.

From this portlet you can edit the available, system-wide, security realms. There is also a **usage** link with examples of how to use the realm from your application.

This portlet also includes a security realm creation wizard for creating new realms.

[Back to Top](#)

Keystores

This portlet walks you through the process of configuring keystores to use with SSL connectors. From this portlet you can add or edit keystores, add Trust Certificates and create private keys.

[Back to Top](#)

Certificate Authority

This portlet allows you to create a Certification Authority (CA) in Geronimo and issue certificates in reply to Certificate Signing Requests (CSRs).

[Back to Top](#)

Embedded DB

Organized under this group you will find links:

-  [#DB Info](#)
- [#DB Manager](#)

DB Info

This portlet displays information about the internal database, such as:

- Database Product name and version.
- Driver and version.
- Connection URL.
- Supported functions and the supported SQL commands.

[Back to Top](#)

DB Manager

This option provides two portlets, **DB Viewer** and **Run SQL**.

- **DB Viewer**
This portlet displays all the available databases and their tables and displays the contents of the tables. To view the tables in a particular database, click on the database link. This will show all the tables in the database. To view the contents of the tables, click on the **View Contents** link. At the bottom of the DB Viewer portlet there are links to take you back to **View Databases** or **View Tables**.
- **Run SQL**
This portlet lets you run SQL commands to manipulate the data in the tables, create a new database or delete a database. You can enter the SQL commands in the **SQL Command(s)** text box, select the database that will be used and then click on **Run SQL** to execute the command.

[Back to Top](#)

JMX Viewer

This portlet provides a **tree** like representation for you to browse the different types of MBeans. Each MBean will be represented as a tree node that shows its object name representation. All MBeans will give you a list of MBeans grouped by its domain.

[Back to Top](#)

LDAP Viewer

This portlet lets you connect to any LDAP server and browse its content but not edit it. This portlet comes predefined to access the LDAP embedded in Geronimo, make sure the service is running before you connect to the server.

[Back to Top](#)